

## Accessories Quick Reference Guide

### Contents:

- Tubing – 316 & 304 Seamless and Welded, Stick and Coiled
- Pre-Insulated Tubing and Accessories
- Coiled Copper Tubing
- Laboratory Grade Tubing
- Low Density Polyethylene Tubing
- TFE Tubing
- Push-on Hose
- PTFE lined Hose
- Flexible Metal Hose
- Hydraulic Thermoplastic Hose
- Snap Track Aluminum Cable Tray Systems
- Precision Tubing Raceway
- Instrument Stands
- Tube Clips, Racks and Clamps
- Cable Tie Wraps
- Tube Cutters
- Tube Benders
- Deburring Tools
- Power Tube Bender
- Anaerobic Pipe Sealant (With PTFE)
- PTFE Tape
- Leak Detector
- Gauges
- Commodity Needle Valves
- Commodity Ball Valves
- Multiple Solenoid Valves
- Electric Actuators
- Pneumatic Actuators
- High Pressure Valves and Fittings



#### **Red Deer**

6, 7421 Edgar Industrial Dr  
Red Deer, AB T4P 3R2  
Tel: (403) 348-5980  
Fax: (403) 341-4213  
Email: [rd@dklokcanada.com](mailto:rd@dklokcanada.com)

#### **Edmonton**

#14, 4331 Roper Road  
Edmonton, AB T6B 3S5  
Tel: (780) 469-3675  
Fax: (780) 469-4211  
Email: [edm@dklokcanada.com](mailto:edm@dklokcanada.com)

#### **Calgary**

4010 – 4<sup>th</sup> St SE  
Calgary, AB T2G 2W3  
Tel: (403) 214-7734  
Fax: (403) 214-7764  
Email: [cgy@dklokcanada.com](mailto:cgy@dklokcanada.com)

### Tubing – SMLS and Welded (Stick and Coiled)



- Sizes: 1/16" – 2"
- Seamless Grade: ASTM A269/ A213
- Welded Grade: ASTM A249/ A269
- .012 - .188 wall thickness range
- 304L and 316L type materials available
- Carbon Steel Grade ASTM A179, and special alloys such as Alloy 400, Alloy C276, Alloy 600, and Titanium upon request.

### Pre-Insulated Tubing, and Accessories



- Sizes Vary
- Accessories: Entry Seals, Heat Shrink Splice Kits, End Boots, and Installation tools
- Fully Insulated and Weather Resistant
- Many options available for your needs

### Coiled Copper Tubing



- 1/4" - 1/2"; other sizes available upon request
- Copper coiled tubing
- Lengths are 50 or 100FT
- Working PSI rated at + 100F (+38C)
- Manufactured to ASTM B280

### Laboratory Grade Tubing



- 1/4" – 3/4"; other sizes available upon request
- Made of Halogenated Vinyl Plastic (R3603)
- can be compared to rubber in its toughness, flexibility, and dielectric strength
- The temperature range is from -45 to 70°C
- Tubing is sold in boxes of 50ft
- Good chemical resistance and provides a pressure-tight seal

### Low Density Polyethylene Tubing



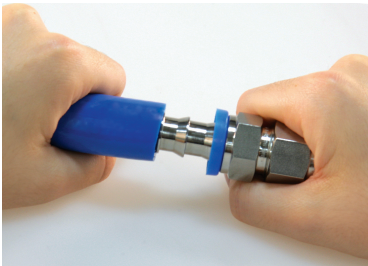
- 1/8" to 2"
- Polyethylene
- Lightweight, and economical
- Excellent environmental stress crack resistance.
- Solvent Resistant
- UV resistant (Black)
- Used in Low PSI applications. Pressures vary due to ID of tubing

### TFE Tubing



- 1/8" to 5/8"; other sized available upon request
- -240°C to 260°C.
- TFE is completely unaffected by outdoor weathering
- TFE has the lowest static and dynamic coefficient of friction of any solid material
- It absorbs essentially no moisture
- Comes in various lengths

### Push-On Hose



- 1/4" to 3/4"
- Blue Oil resistant Nitrile Hose
- Light flexible and couples easily, no clamps or special tools needed
- Flame resistant cover is branded with MSHA approved number
- Reinforcement: One textile Braid
- -40 to 212°F - 300 PSI Max
- Comes in Black, Blue, Grey, Green, Yellow, and Red.

### PTFE Lined Hose



- 100F (-73°C) to 500°F (260°C)
- 1/8" - 1"
- High pressure rated
- Can be sterilized and autoclaved
- Reinforced with 304 Stainless Steel Braid
- Chemically resistant, handles variety of fluids
- Unique braid reinforcement allows hose to maintain its shape

### Flexible Metal Hose



- Unbraided, single Braided or Double braided
- Many types of metal material available upon request such as; bronze, stainless and Monel
- 1/8" – 2", other sizes may be available upon request
- Temperature and pressure ranges Vary depending on size and material of hose
- Comes in a variety of length, and end connections

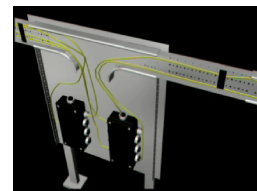
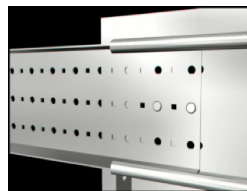
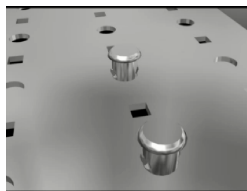
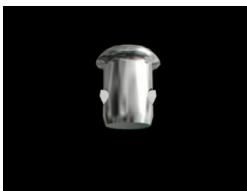
### Hydraulic Thermoplastic Hose



- -40 °C to 100 °C or to 66 °C, with water based or fire-resistant fluids
- Low to high pressure available; pressure also depends on size of hose
- Black perforated polyurethane cover
- Braided synthetic fiber reinforcement
- Nylon core tube
- Many end connections available

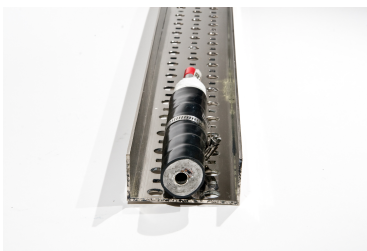
### Snap Track Aluminum Cable Tray Systems

- Patented Push Pin Assembly reduces installation time, labor and cost by not requiring the usage of nuts, bolts, or tools.
- Allows all splices and fittings to be used as expansion guides without the need for gap calculation based on temperature differentials. UL/CUL approved



### Precision Tubing Raceway

- Channel or angle comes in Aluminum (AL), Stainless Steel (SS), and Galvanized (HDG)
- 1", 2", 4", 6" Widths and 1" and 2" Heights



## Instrumentation Stands



- **Materials:** Hot Dipped Galvanized Carbon Steel (HDG), Aluminum (AL), 304SS (4SS) and 316SS (6SS)
- Many types of stands available such as:
  - Single Floor Stand
  - Double Floor Stand
  - Single Wall Stand
  - Double Wall Stand

Other Stands and Mounts are available upon request.

## Tube Clips



- 1/4" to 2"  
- -40 to 212°F (-40 to 100°C)



- 1/4" to 2"  
- Stainless steel, Type 301 or 304

## Clamps



Cusha Clamp  
- Tube -1/4" to 6-1/8"  
- -50°F to 275°F



Beta Clamp  
- Many sizes available  
- Many series such as standard, heavy and twin



Super Strut Pipe Clamp  
- 1/4" - 1" other sizes available upon request  
- Works with all depths of strut - 13/16" to 3 1/4".  
- Attaches a full range of EMT, Rigid conduit and cable to strut channels.

## Tube Support Strips



- Sizes: 1/4", 3/8", 1/2", 3/4"
- Polypropylene Multi Clip; with up to 10 channels
- -40 to 200°F (-40 to 93°C)
- Supports tube or hose runs in a variety of sizes, offer push-in installation, and install easily to wall or equipment frame using a screw or bolt.

### Cable Tie Wraps



- Cable straps are available in standard lengths of 10, 13.5, 16 and 27 inches, and in convenient 50 foot reels where specific lengths need to be established by the installer in the field.
- -30°F to 150°F
- Offers superior resistance to sunlight, moisture, and salt environments.
- Minimum Tensile Strength is 250 lbs.

### Tube Cutter



- Capacity: 3/16"-1 1/8"
- Stainless Steel Tubing Cutter
- A contoured frame allows for easy alignment while adjusting
- Large knob to give control over feed screw torque
- Uses six rollers to decrease drag around the tubing

### Tube Bender – Heavy Duty 180 Degree



- Available for 1/4" to 1/2" OD Tubing
- New design for accurate and tight bends up to 180 Degree in Stainless Steel and other tough metals
- Patented, quick action trigger release repositions two-stage handle midway through a bend when both handles begin to meet. This feature allows east fabrication of optimized bends up to 180 Degrees with reduced effort, better control and no crossing of handles
- Rollers in bending handle reduce friction and bending effort; eliminate scoring of tubing
- Comfortable and durable ergonomically molded cushion grips
- Vise lug for mounting in vise

### Deburring Tool – Internal and External



- 3/16" to 1-1/2" O.D. Tubing
- Ideal for Inner-Outer Reaming, and internal deburring

## Robend 3000 Set



- 1/2" to 1-1/8" copper and 3/8" to 3/4" steel
- Portable Power Tube Bender for Copper, Stainless or Steel Pipe
- Simple and fast pre-selection of required bending angle on rotary scale
- Automatic stop at preselected angle during automatic operation
- Precision clutch separates gears and motor, protecting the machine without wear out and frequent adjustments of sliding clutches
- Precise mechanical stop in manual operation by using forward / reverse gear shift
- High-reduction gears
- High-speed rapid reverse
- Reliable 750W universal motor, double insulated, 115V, 50/60Hz
- Comes with 3 or 4 tool set assortment

## Anaerobic Pipe Sealant – with PTFE



- -65°F to 375°F (-54°C to 191°C).
- Forms a tough, insoluble, vibration-proof seal
- Pressure Range: Seals to 10,000 psi
- 50 ml or 250 ml

## PTFE Tape

- Temp rating: -400°F to 500°F (-240°C to 260°C).
- Pressure Range: 10,000 Psi



White Tape–High Density



Green Tape–Oxygen



Nickel PTFE–Stainless



Yellow Tape–Gas

## Leak Detector



- Cold weather Leak Detector
- Temperature good to -65F
- Comes in 8oz, and 4L

## Gauges



- Pressure gauges: Vacuum, Compound, Absolute, Differential, And Gauge Pressures
- Brass, and Stainless Steel internal and external options
- PSI, KPA, or Dual
- Many different options available depending on application

## Commodity Ball Valves



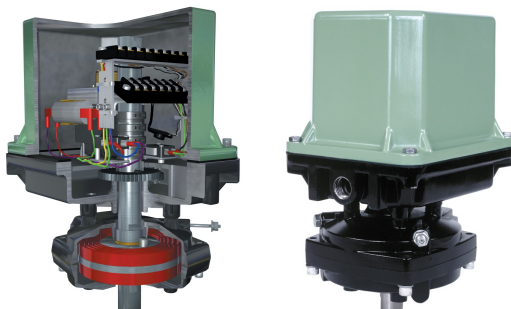
- 1/4" – 2"
- Stainless Steel, and Carbon Steel
- Comes in 1, 2 or 3 PC
- Full and Half Port
- Up to 2500 PSI depending on valve and size
- Blow-out proof stem

## Multiple Solenoid Valves



Solenoid Valves are designed to control the flow of air, gas, water, oil and steam. There is a very large selection of 2-, 3- and 4-way solenoid valves, designed to handle the most demanding fluid control applications.

## Electric Actuators



- 60°F to +150°F (-50°C to +65°C)
- NEMA Rated
- Spring return option
- Many options available
- 115, 230, and 24 VAC, 1 Phase, 50/60 Hz.



## Pneumatic Actuators



- Many different styles available upon request
- Torque from 81 - 23,797 Lbs.
- Double acting (20-120PSI)
- Spring return (30-120PSI)
- 40C - +80C
- NAMUR, ISO Interface



## High Pressure Valves and Fittings

- 1/4" to 1"; other sizes available upon request
- Pressure Ranges can vary from 15,000PSI to 150,000PSI
- Ball Valves, Pipe Equipment, Low; Medium; and High Pressure Equipment
- Specialty Products such as Manifolds and Swivel Joints
- Actuators
- Adapters, Couplings, and accessories
- Sour Gas Equipment such as rupture discs, Anti-Vibration Glands, and safety heads
- Threading and Coning Tools

